



# RBAK Polyclonal Antibody

<b>Catalog No</b>	YP-Ab-01967
<b>Isotype</b>	IgG
<b>Reactivity</b>	Human;Mouse
<b>Applications</b>	WB;IF;ELISA;IHC
<b>Gene Name</b>	RBAK
<b>Protein Name</b>	RB-associated KRAB zinc finger protein
<b>Immunogen</b>	The antiserum was produced against synthesized peptide derived from human RBAK. AA range:1-50
<b>Specificity</b>	RBAK Polyclonal Antibody detects endogenous levels of RBAK protein.
<b>Formulation</b>	Liquid in PBS containing 50% glycerol, 0.5% BSA and 0.02% sodium azide.
<b>Source</b>	Polyclonal, Rabbit,IgG
<b>Purification</b>	The antibody was affinity-purified from rabbit antiserum by affinity-chromatography using epitope-specific immunogen.
<b>Dilution</b>	WB 1:500-2000; IF/ICC 1:50-200;ELISA 1:2000-20000;IHC-p 1:50-200
<b>Concentration</b>	1 mg/ml
<b>Purity</b>	≥90%
<b>Storage Stability</b>	-20°C/1 year
<b>Synonyms</b>	RBAK; ZNF769; RB-associated KRAB zinc finger protein; RB-associated KRAB repressor; hRBaK; Zinc finger protein 769
<b>Observed Band</b>	85kD
<b>Cell Pathway</b>	Nucleus .
<b>Tissue Specificity</b>	Expressed in bone, brain, heart, kidney, liver, lung, pancreas and placenta.
<b>Function</b>	function:May repress E2F-dependent transcription. May promote AR-dependent transcription.,similarity:Belongs to the krueppel C2H2-type zinc-finger protein family.,similarity:Contains 1 KRAB domain.,similarity:Contains 16 C2H2-type zinc fingers.,subunit:Interacts with AR and RB1. May also interact with other nuclear hormone receptors such as NR3C1/GR.,tissue specificity:Expressed in bone, brain, heart, kidney, liver, lung, pancreas and placenta.,
<b>Background</b>	This gene encodes a nuclear protein which interacts with the tumor suppressor retinoblastoma 1. The two interacting proteins are thought to act as a transcriptional repressor for promoters which are activated by the E2F1 transcription factor. This protein contains a Kruppel-associated box (KRAB), which is a transcriptional repressor motif. Read-through transcripts that include exons from the downstream gene LOC389458 are expressed from this locus. [provided by RefSeq, Mar 2011],



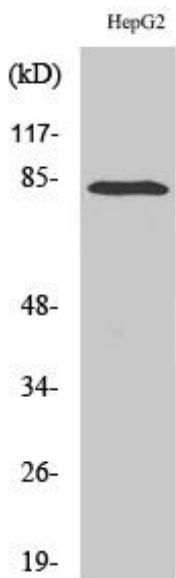
**matters needing attention**

Avoid repeated freezing and thawing!

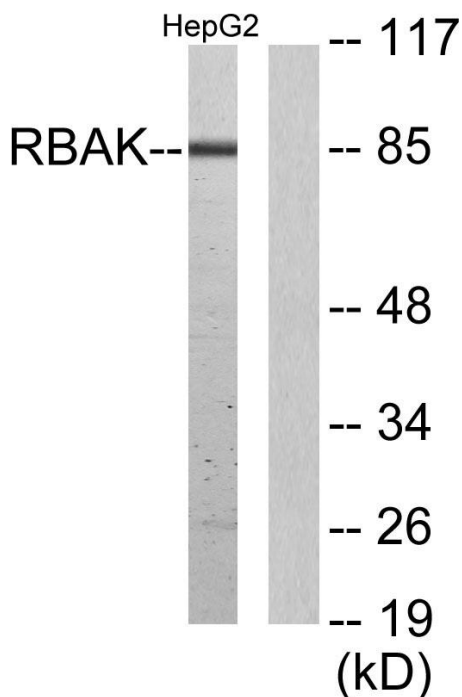
**Usage suggestions**

This product can be used in immunological reaction related experiments. For more information, please consult technical personnel.

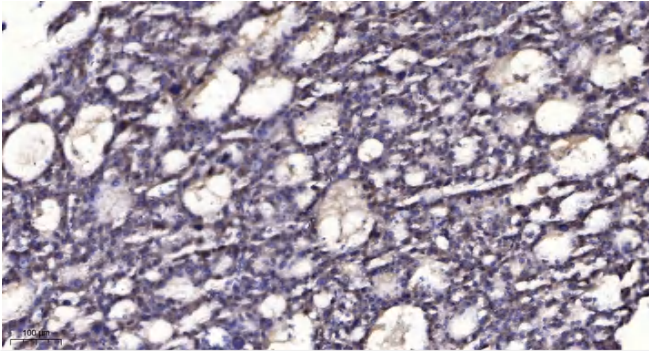
**Products Images**



Western Blot analysis of various cells using RBAK Polyclonal Antibody cells nucleus extracted by Minute TM Cytoplasmic and Nuclear Fractionation kit (SC-003, Inventbiotech, MN, USA).



Western blot analysis of lysates from HepG2 cells, using RBAK Antibody. The lane on the right is blocked with the synthesized peptide.



Immunohistochemical analysis of paraffin-embedded human liver cancer. 1, Antibody was diluted at 1:200(4° overnight). 2, Tris-EDTA,pH9.0 was used for antigen retrieval. 3,Secondary antibody was diluted at 1:200(room temperature, 45min).